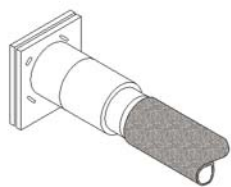


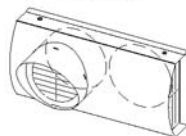
Traversée de mur
TMK 125/150



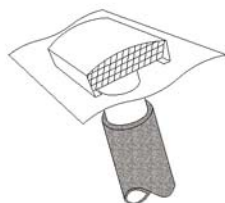
Grille pare-pluie
RAG 200



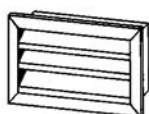
Grille de façade mixte
IP-FKB 125



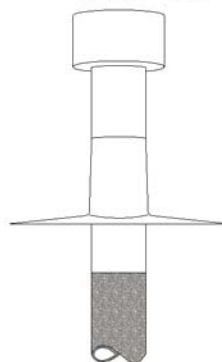
Traversée de toit
universelle DDF 125



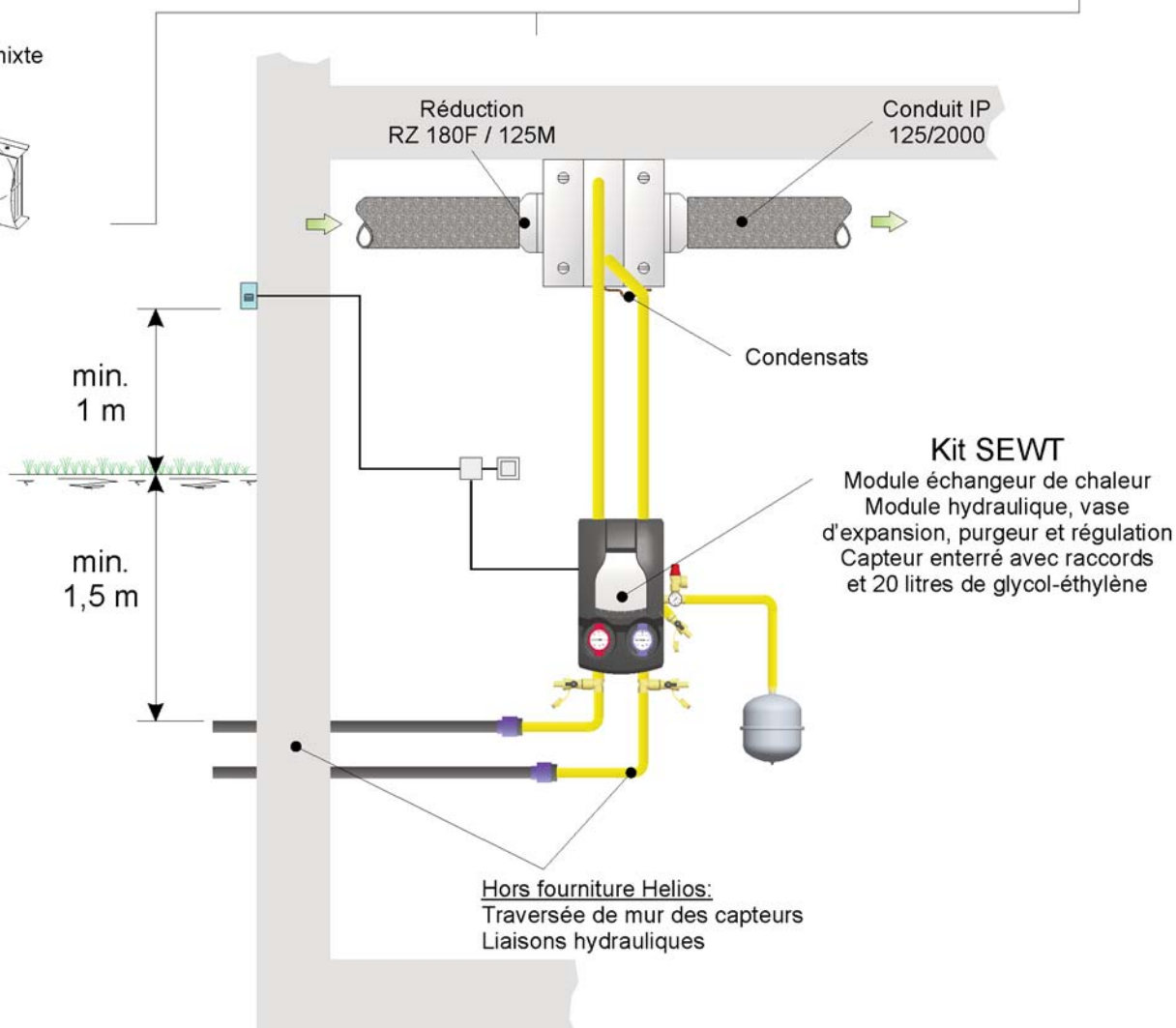
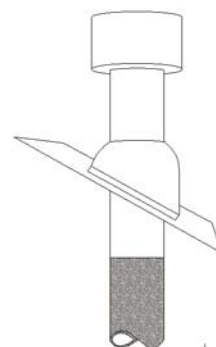
Grille extérieure
WSG 200



Traversée de toit plat
IP-DH 125
+ IP-FDP 125



Traversée de toit incliné
IP-DH 125
+ IP-UDP 125



Exemple d'installation

Air extérieur



Date : 31/08/2011

Nom : MF

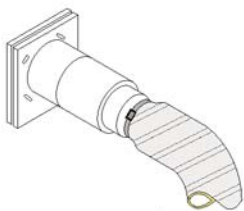
Page : 2 / 13

Schéma SEWT 101 - ISO - DN 125

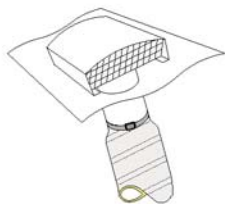
Plan N° :

s_sewt 101-ISO-125

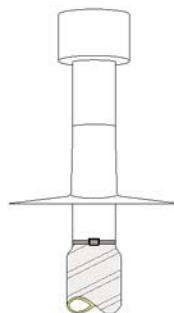
Traversée de mur
TMK 125/150
+ Collier SCH 125



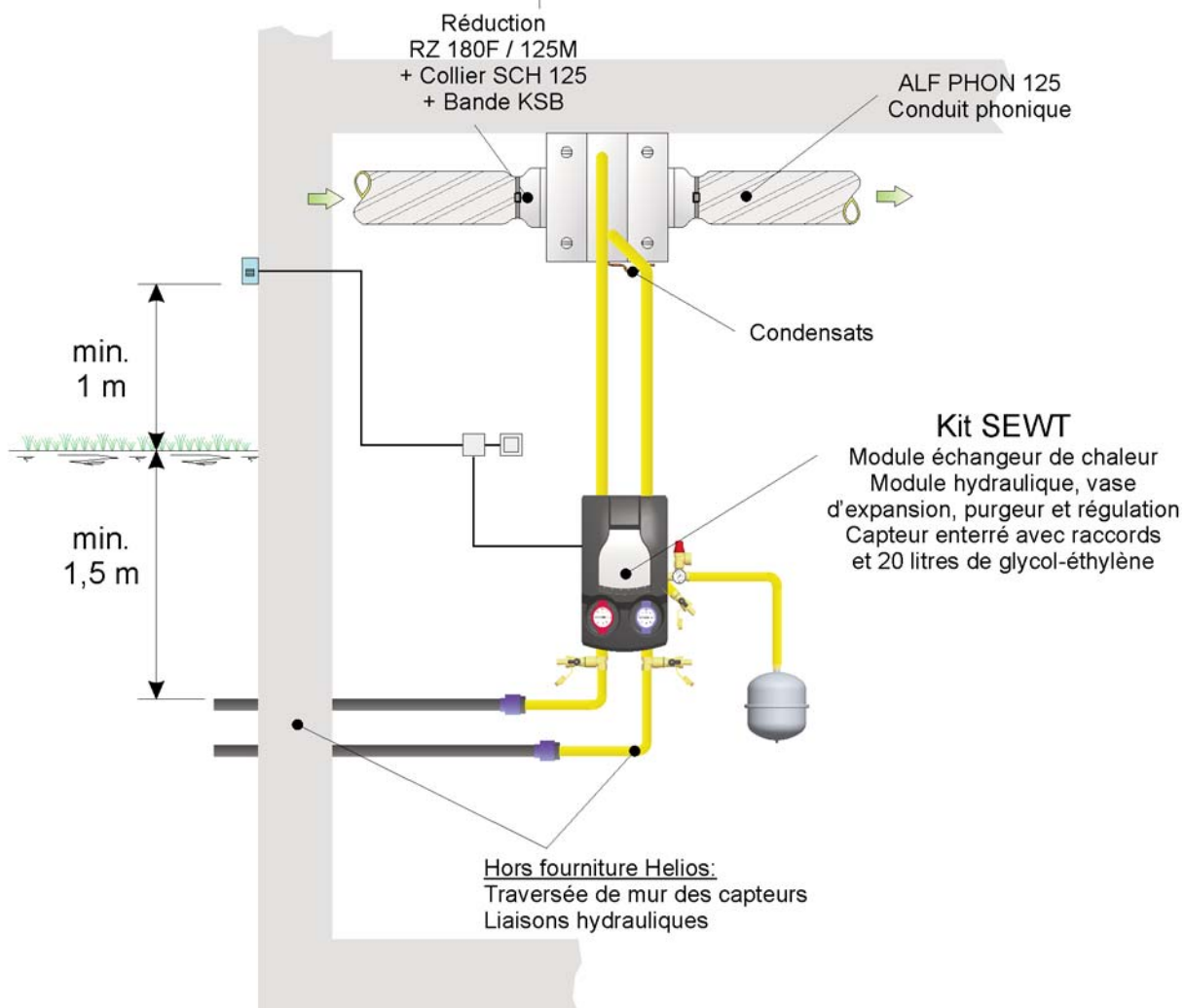
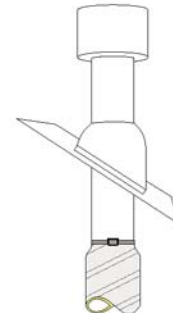
Traversée de toit
universelle DDF 125
RVB 125 F/M
+ Collier SCH 125



Traversée de toit plat
DH 125 + FDP 125
+ SV 125
+ Collier SCH 125



Traversée de toit incliné
DH 125 + UDP 125
+ SV 125
+ Collier SCH 125



Exemple d'installation

Air extérieur



Date : 31/08/2011

Nom : MF

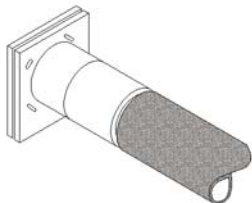
Page : 3 / 13

Schéma SEWT 101 - ALF - DN 125

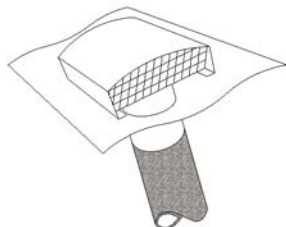
Plan N° :

s_sewt 101-ALF-125

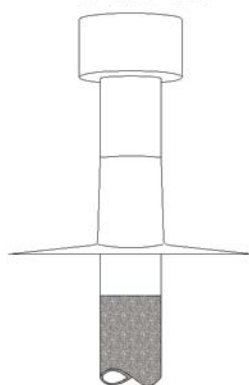
Traversée de mur
TMK 125/150



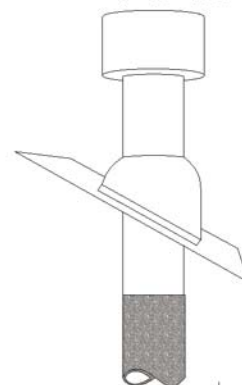
Traversée de toit
universelle DDF 160



Traversée de toit plat
IP-DH 160
+IP-FDP 160



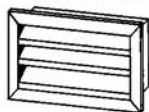
Traversée de toit incliné
IP-DH 160
+ IP-DP 160



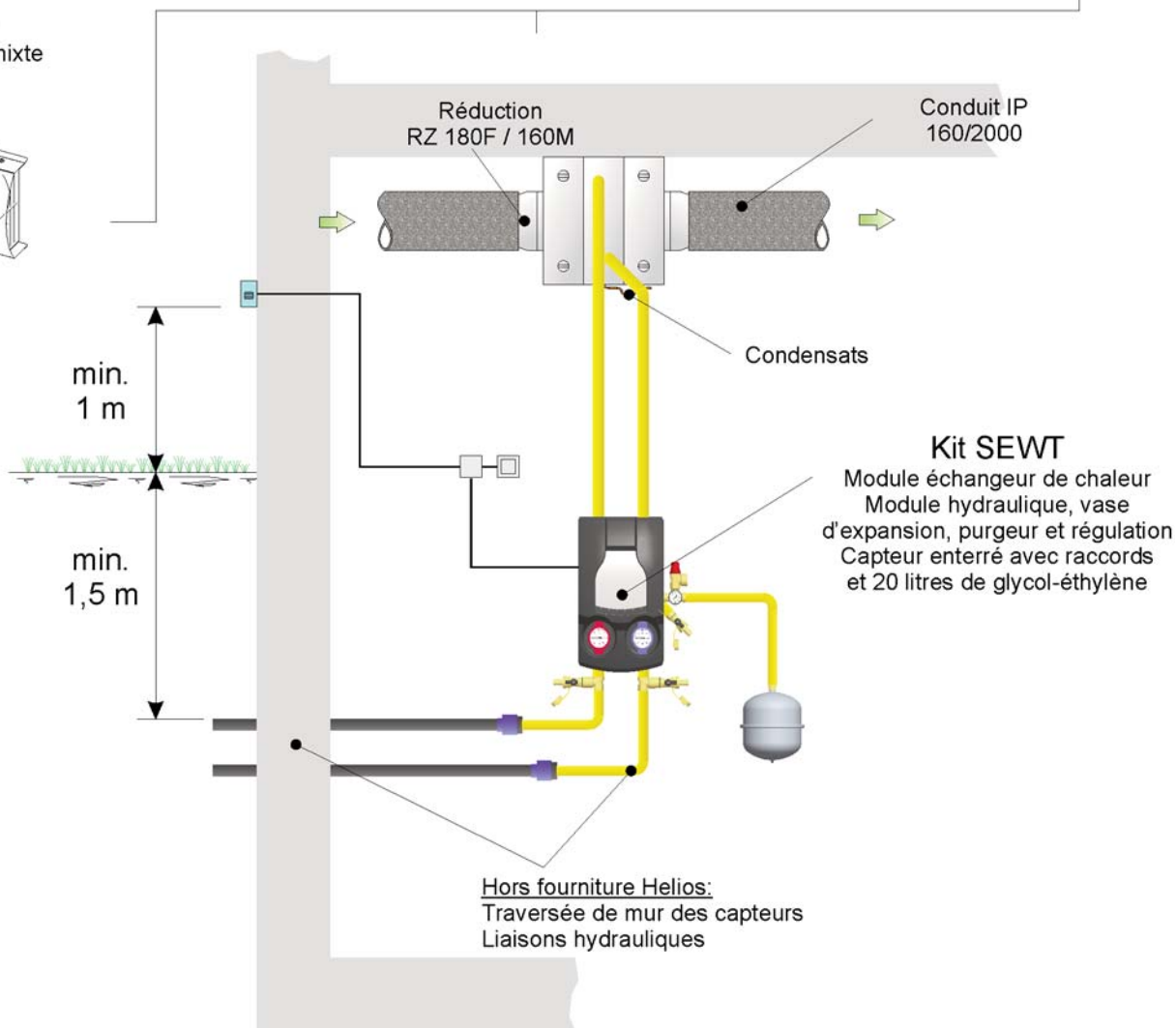
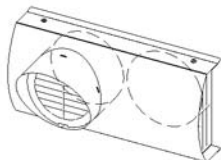
Grille pare-pluie
RAG 200



Grille extérieure
WSG 200



Grille de façade mixte
IP-FKB 160



Exemple d'installation

Air extérieur



Date : 31/08/2011

Nom : MF

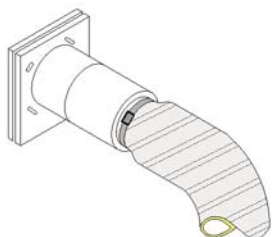
Page : 4 / 13

Schéma SEWT 101 - ISO - DN 160

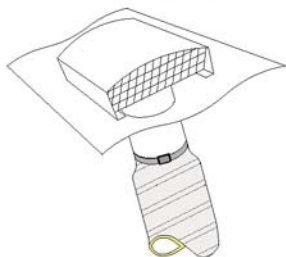
Plan N° :

s_sewt 101-ISO-160

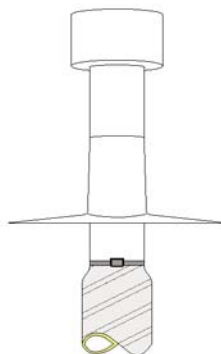
Traversée de mur
TMK 125/150
+ Collier SCH 160



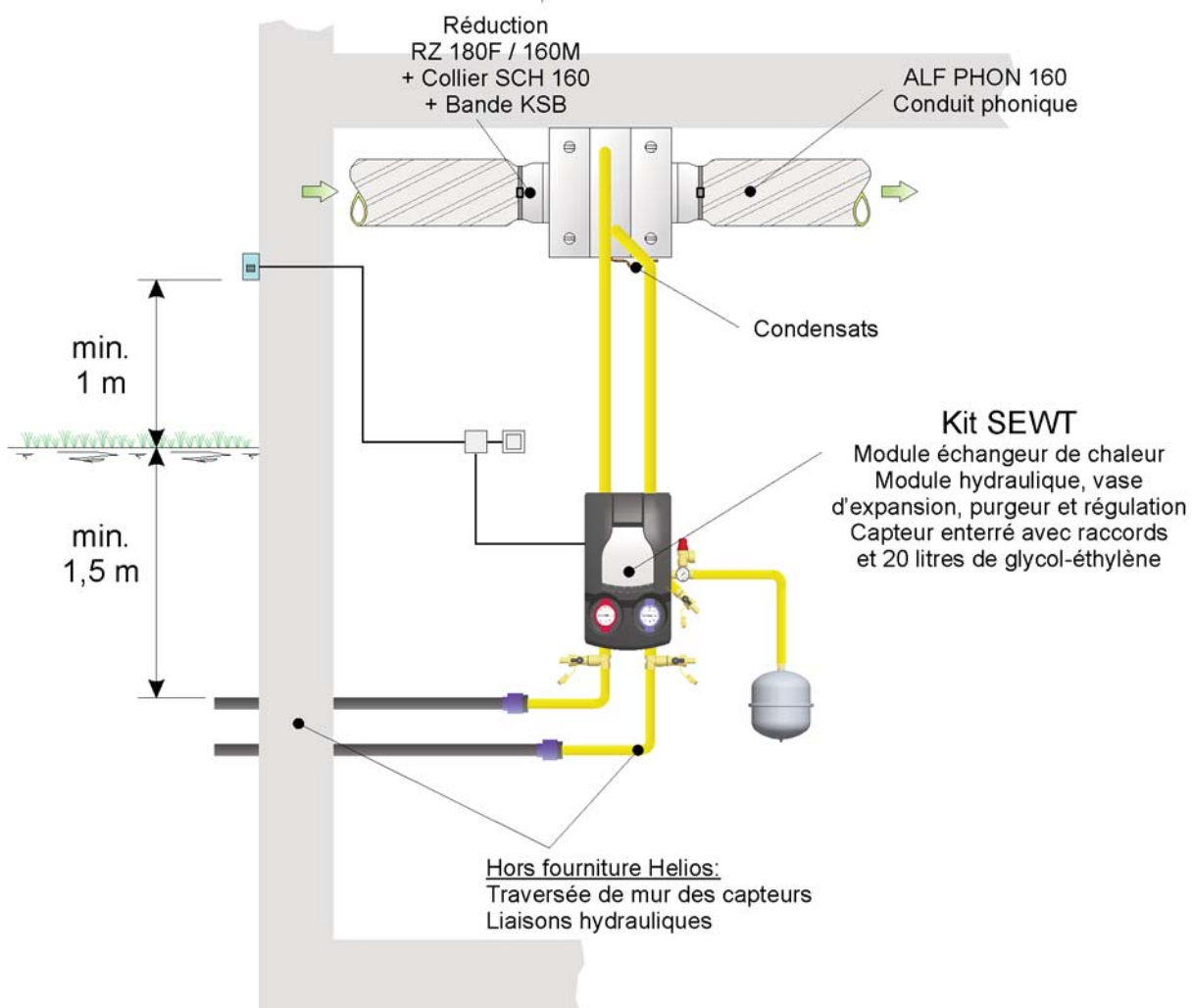
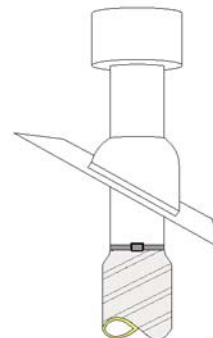
Traversée de toit
universelle DDF 160
RVB 160 F/M
+ Collier SCH 160



Traversée de toit plat
DH 160 + FDP 160
+ SV 160
+ Collier SCH 160



Traversée de toit incliné
DH 160 + UDP 160
+ SV 160
+ Collier SCH 160



Exemple d'installation

 Air extérieur



Date : 31/08/2011

Nom : MF

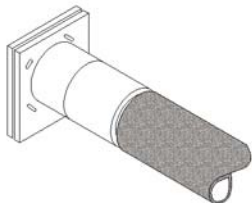
Page : 5 / 13

Schéma SEWT 101 - ALF - 160

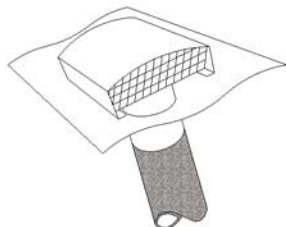
Plan N° :

s_sewt 101-ALF-160

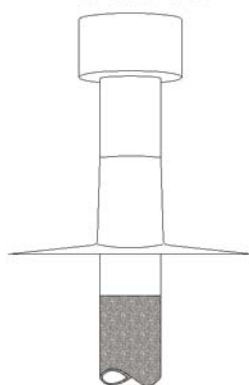
Traversée de mur
TMK 125/150



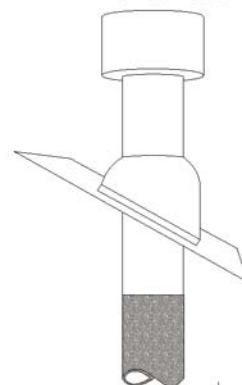
Traversée de toit
universelle DDF 160



Traversée de toit plat
IP-DH 160
+IP-FDP 160



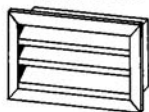
Traversée de toit incliné
IP-DH 160
+ IP-DP 160



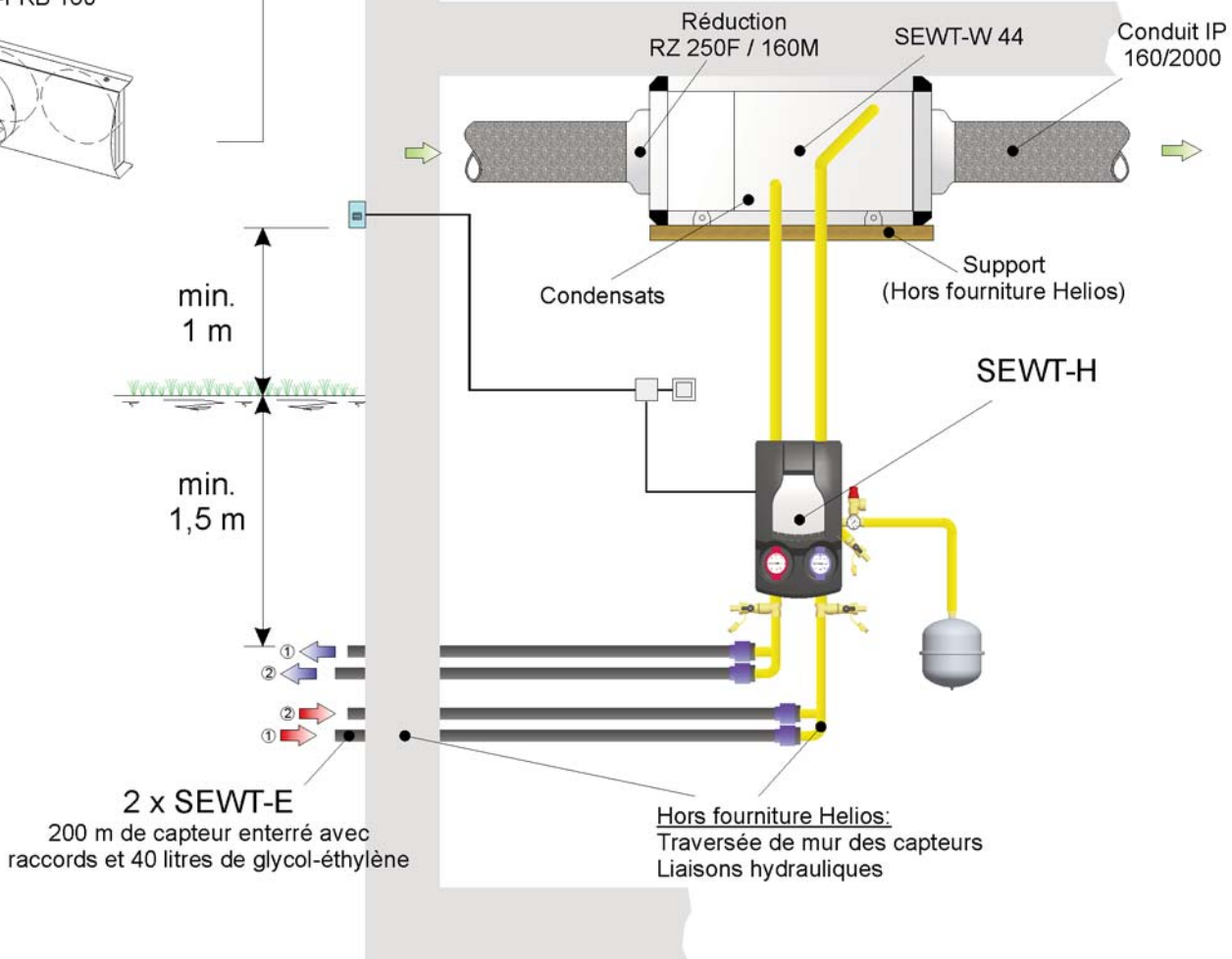
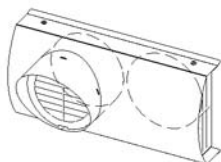
Grille pare-pluie
RAG 200



Grille extérieure
WSG 200



Grille de façade mixte
IP-FKB 160



Exemple d'installation: SEWT-W 44 en servitude droite

 Air extérieur



Date : 31/08/2011

Nom : MF

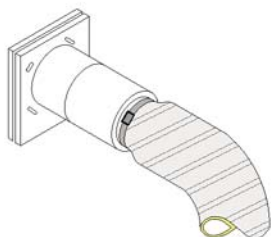
Page : 6 / 13

Schéma SEWT 102 - ISO - SC - DN 160

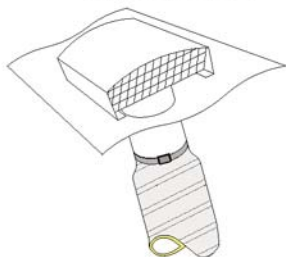
Plan N° :

s_sewt 102-ISO-SC-160

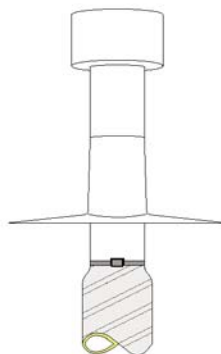
Traversée de mur
TMK 125/150
+ Collier SCH 160



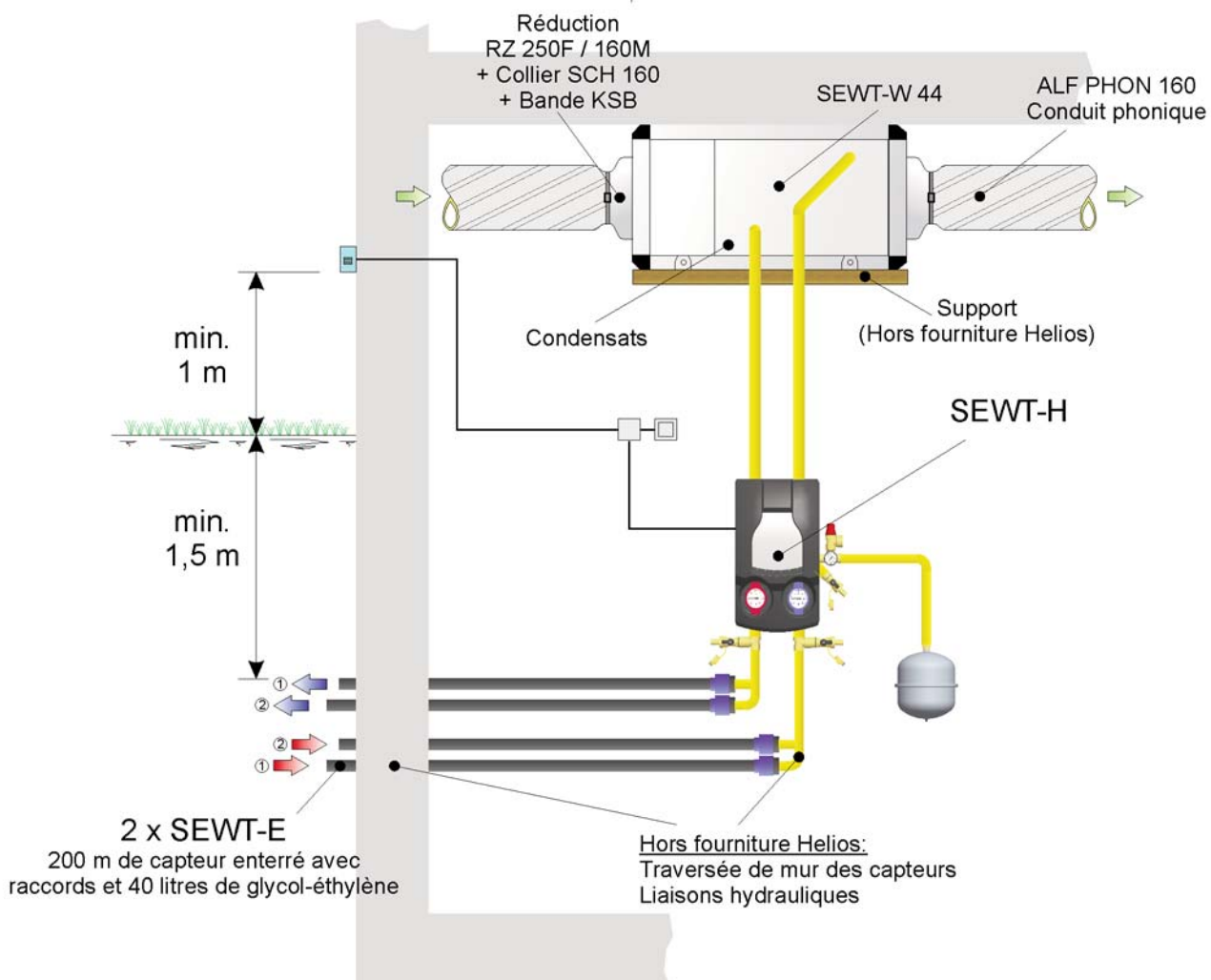
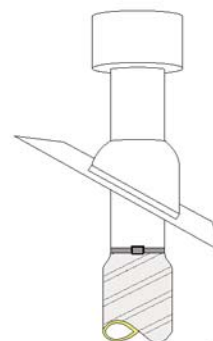
Traversée de toit
universelle DDF 160
RVB 160 F/M
+ Collier SCH 160



Traversée de toit plat
DH 160 + FDP 160
+ SV 160
+ Collier SCH 160



Traversée de toit incliné
DH 160 + UDP 160
+ SV 160
+ Collier SCH 160



Exemple d'installation: SEWT-W 44 en servitude droite

Air extérieur

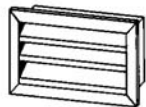


Date : 31/08/2011
Nom : MF
Page : 7 / 13

Schéma SEWT 102 - ALF - SC - DN 160

Plan N° :
s_sewt 102-ALF-SC-160

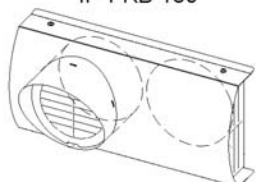
Grille extérieure
WSG 200



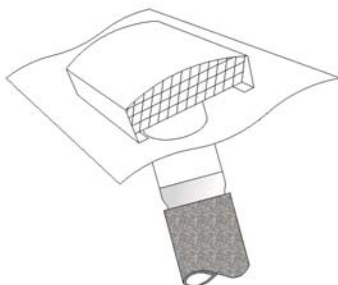
Grille pare-pluie
RAG 200



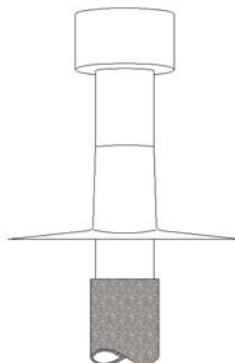
Grille de façade mixte
IP-FKB 180



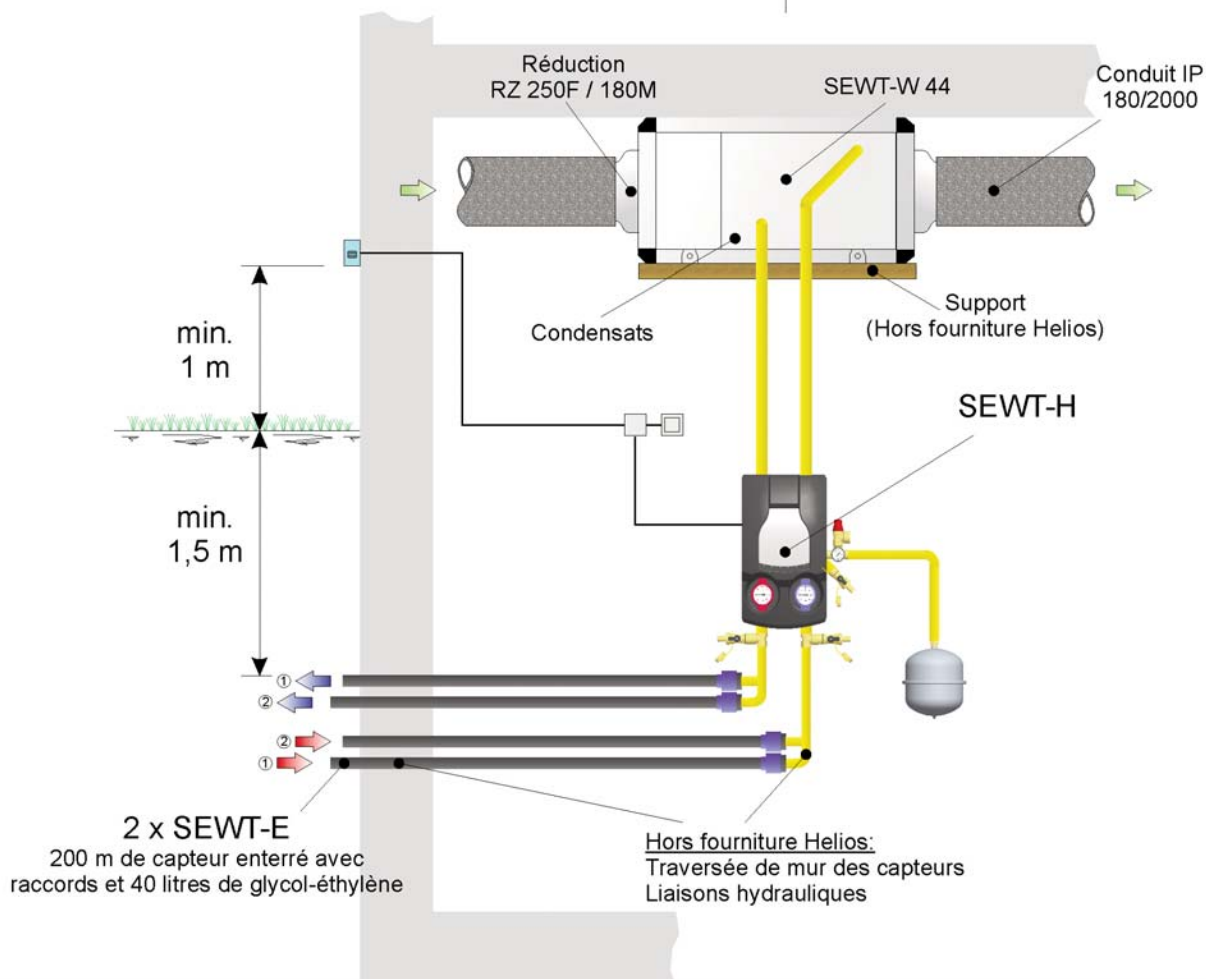
Traversée de toit
universelle DDF 200
RZ 200F / 180M



Traversée de toit plat
IP-DH 180 + RVBD 180
+ IP-FDP 160



Traversée de toit incliné
IP-DH 180 + RVBD 180
+ IP-DP 180



Exemple d'installation: SEWT-W 44 en servitude droite

Air extérieur



Date : 31/08/2011

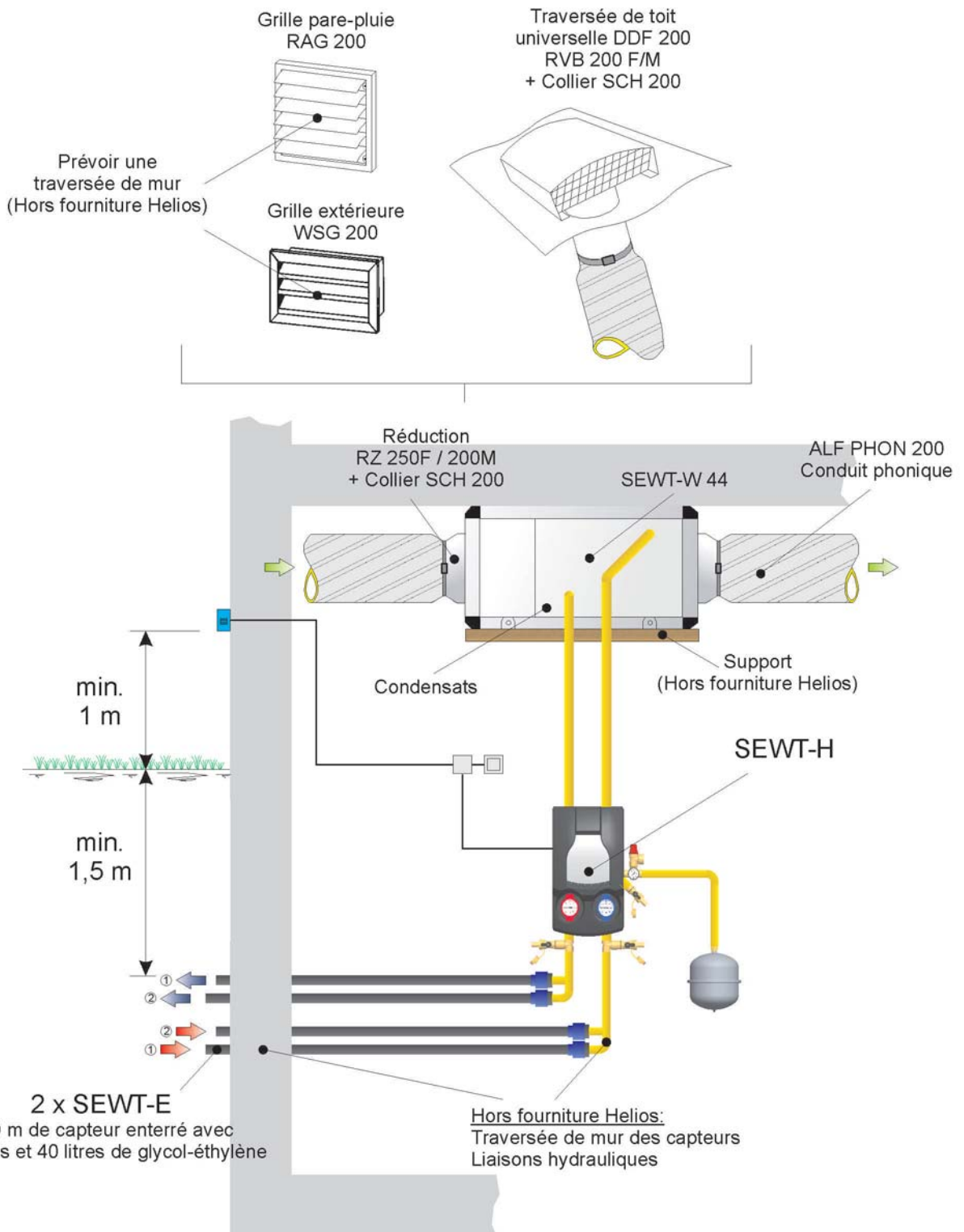
Nom : MF

Page : 8 / 13

Schéma SEWT 102 - ISO - SC - DN 180

Plan N° :

s_sewt 102-ISO-SC-180



Exemple d'installation: SEWT-W 44 en servitude droite

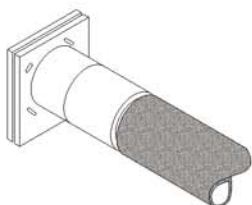


Date : 31/08/2011
Nom : MF
Page : 9 / 13

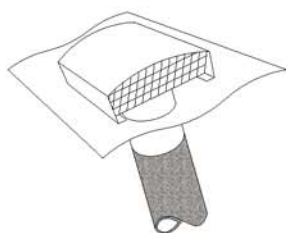
Schéma SEWT 102 - ALF - SC - DN 200

Plan N° :
s_sewt 102-ALF-SC-200

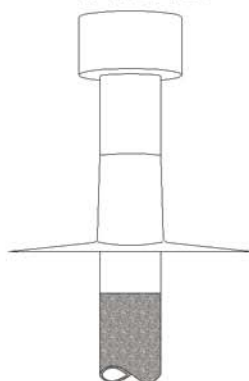
Traversée de mur
TMK 125/150



Traversée de toit
universelle DDF 160



Traversée de toit plat
IP-DH 160
+IP-FDP 160



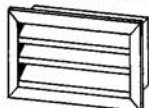
Traversée de toit incliné
IP-DH 160
+ IP-DP 160



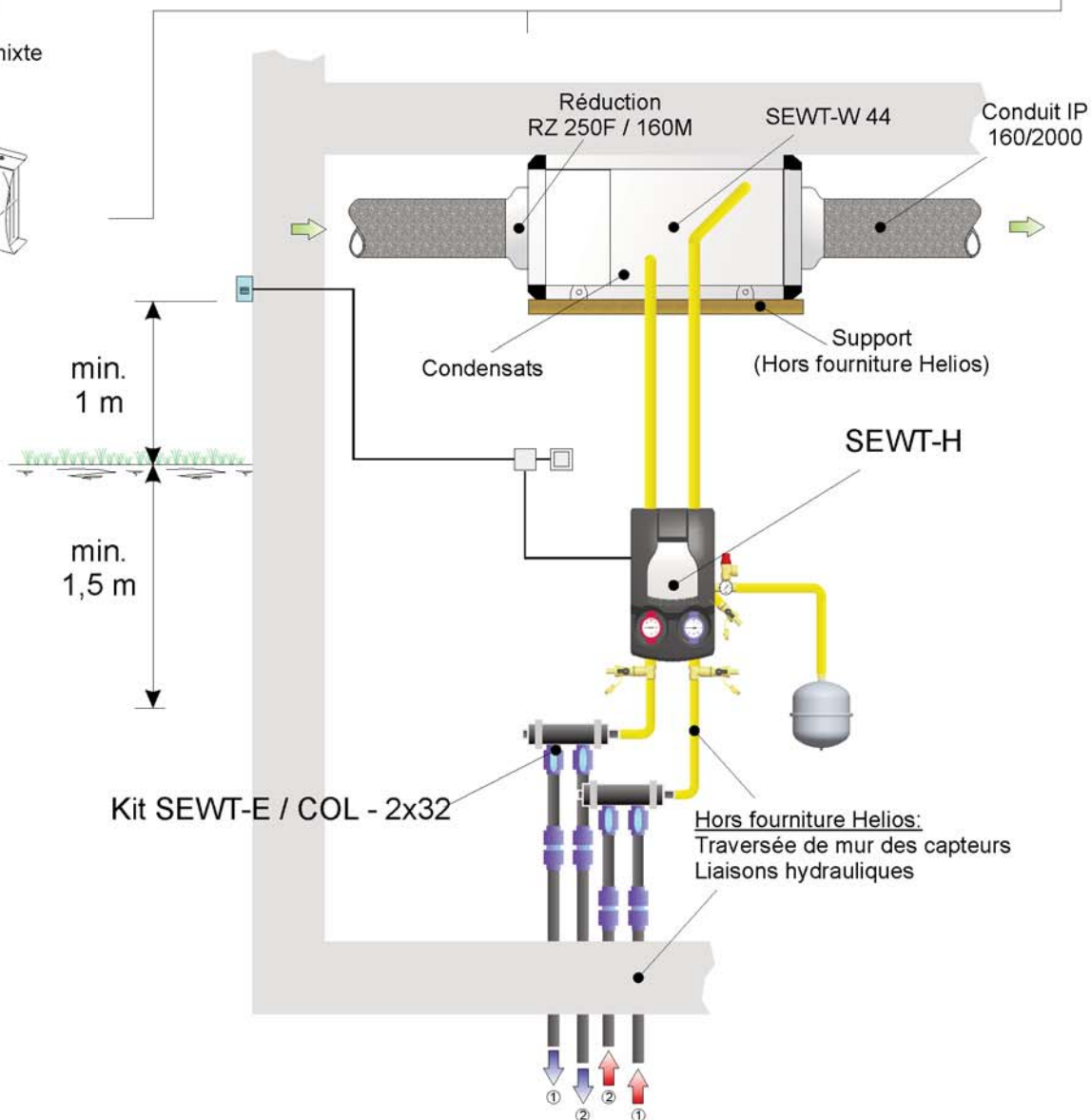
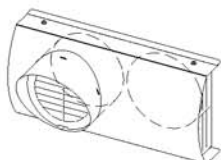
Grille pare-pluie
RAG 200



Grille extérieure
WSG 200



Grille de façade mixte
IP-FKB 160



Exemple d'installation: SEWT-W 44 en servitude droite

Air extérieur



Date : 31/08/2011

Nom : MF

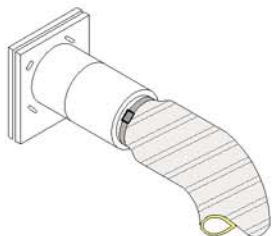
Page : 10 / 13

Schéma SEWT 102 - ISO - AC - DN 160

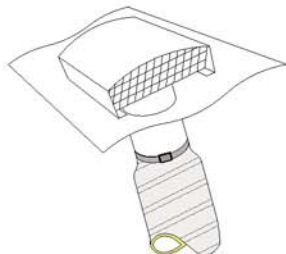
Plan N° :

s_sewt 102-ISO-AC-160

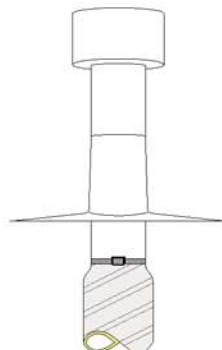
Traversée de mur
TMK 125/150
+ Collier SCH 160



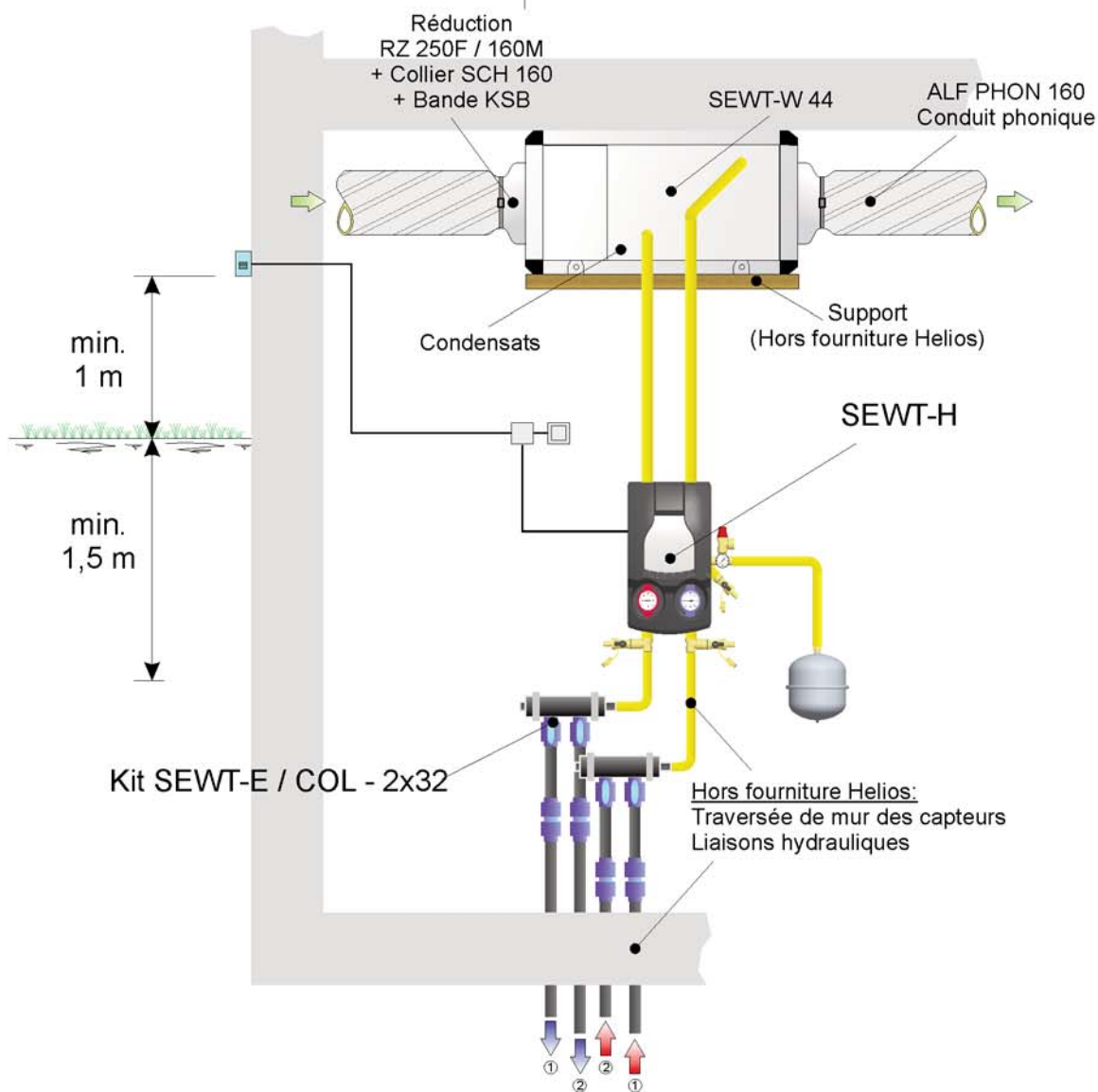
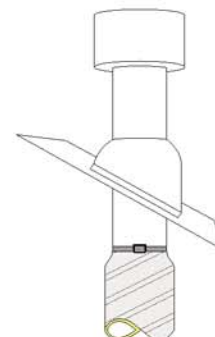
Traversée de toit
universelle DDF 160
RVB 160 F/M
+ Collier SCH 160



Traversée de toit plat
DH 160 + FDP 160
+ SV 160
+ Collier SCH 160



Traversée de toit incliné
DH 160 + UDP 160
+ SV 160
+ Collier SCH 160



Exemple d'installation: SEWT-W 44 en servitude droite

Air extérieur

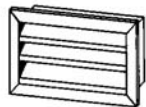


Date : 31/08/2011
Nom : MF
Page : 11 / 13

Schéma SEWT 102 - ALF - AC - DN 160

Plan N° :
s_sewt 102-ALF-AC-160

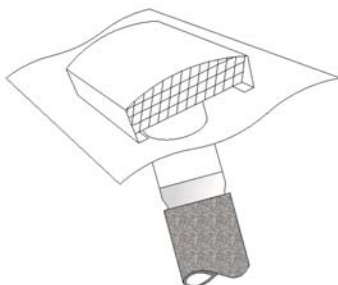
Grille extérieure
WSG 200



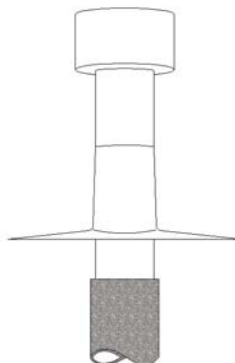
Grille pare-pluie
RAG 200



Traversée de toit
universelle DDF 200
RZ 200F / 180M



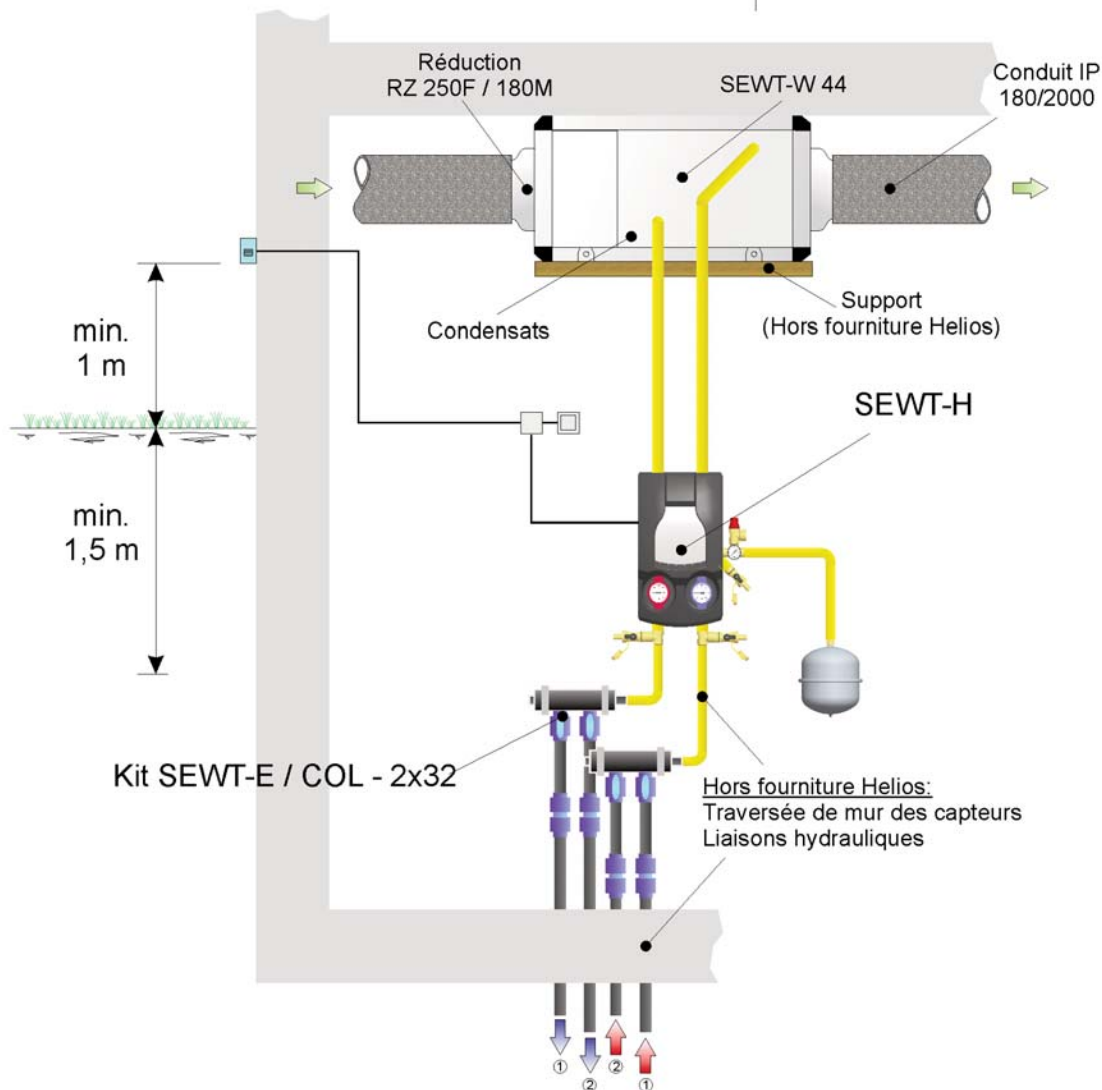
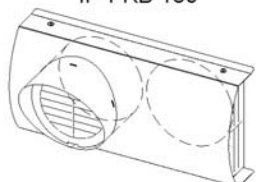
Traversée de toit plat
IP-DH 180 + RVBD 180
+ IP-FDP 160



Traversée de toit incliné
IP-DH 180 + RVBD 180
+ IP-DP 180



Grille de façade mixte
IP-FKB 180



Exemple d'installation: SEWT-W 44 en servitude droite

 Air extérieur



Date : 31/08/2011

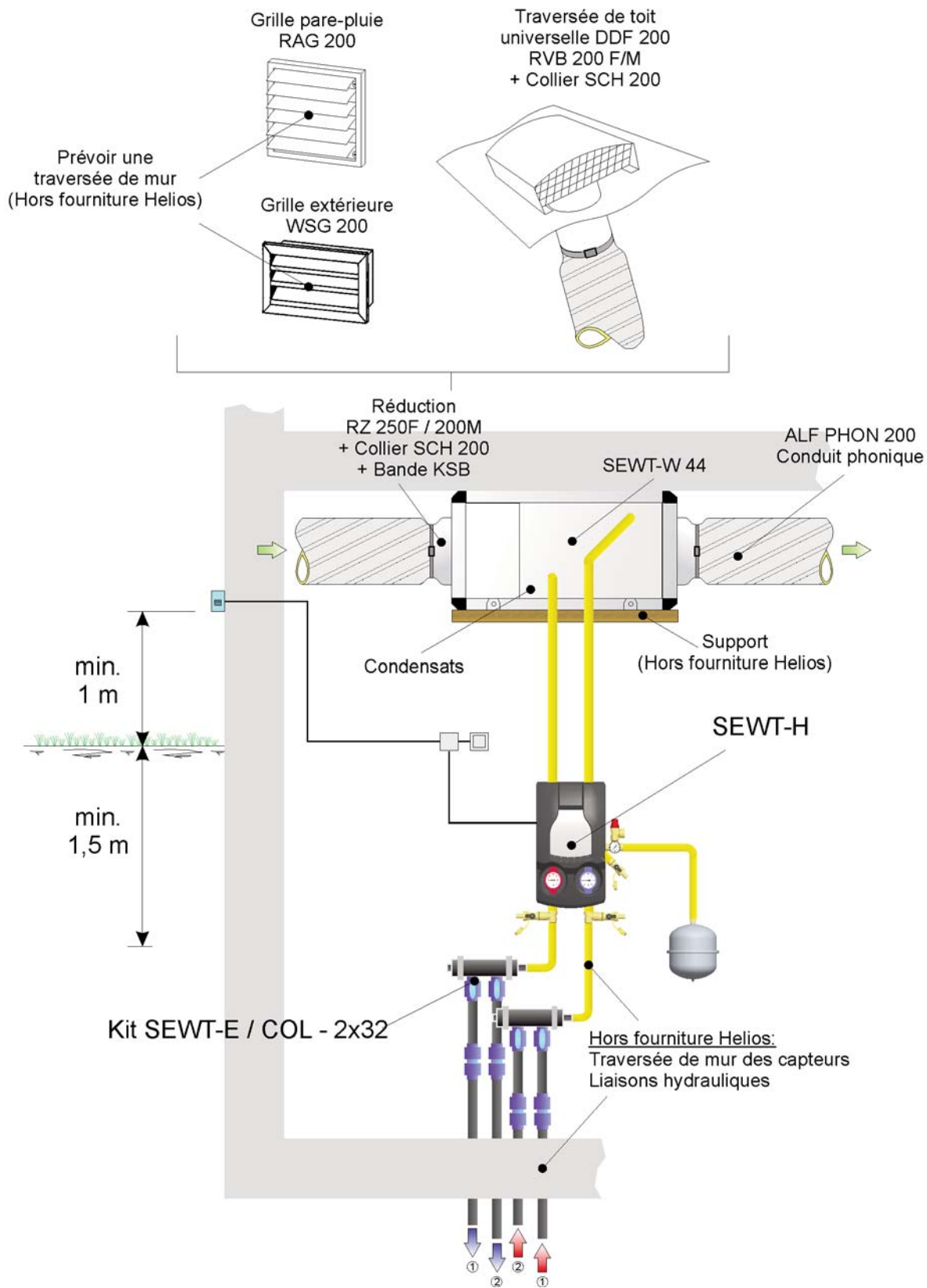
Nom : MF

Page : 12 / 13

Schéma SEWT 102 - ISO - AC - DN 180

Plan N° :

s_sewt 102-ISO-AC-180



Exemple d'installation: SEWT-W 44 en servitude droite

Air extérieur



Date : 31/08/2011
Nom : MF
Page : 13 / 13

Schéma SEWT 102 - ALF - AC - DN 200

Plan N° :
s_sewt 102-ALF-AC-200